

M-Bus Modem Master 20

M-Bus readout by telephone network

Up to 20 M-Bus slaves

Transmission speed max. 2400 Baud

Operating state indicated by LED

Short circuit protected

Rail mounting possible



The Modem Master 20 - modem and master in one device !
It offers a combined modem and M-Bus level converter solution for up to 20 slaves. Important meter readings are instantaneously available from anywhere by mouse-click, without causing any extra travel and personnel costs. For example the consumption data of the customers can easily be recorded and charged minute-exactly.

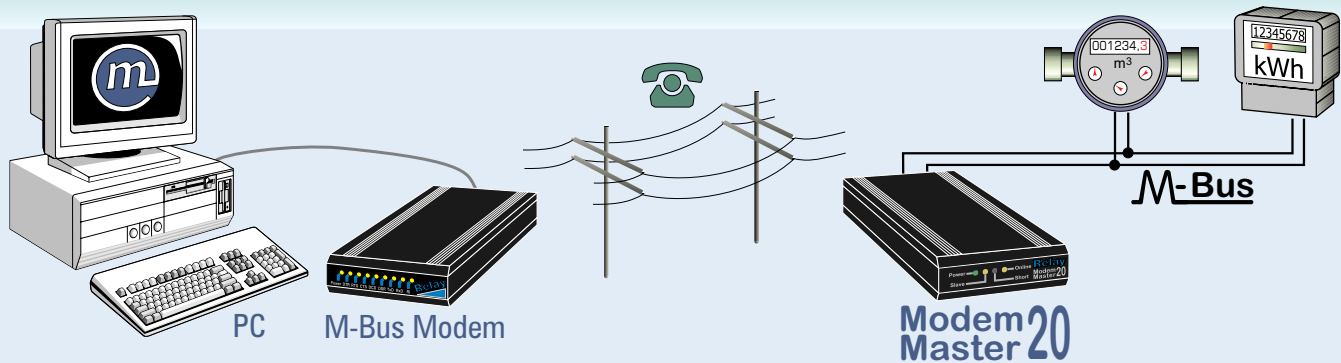
The combination of functions in the Modem Master 20 offers a cost effective solution for smaller M-Bus installations.

Relay

PadMess

A powerful equation:

Modem Master 20 = M-Bus Master interface + modem



Function of the Modem Master 20

The Modem Master 20 is an analog telephone modem with integrated M-Bus master function. Local M-Bus networks with up to 20 slaves can directly be served by the Modem Master. A remote computer can access data by the telephone line from any meter installed in the M-Bus network. A suitable remote station modem (for example our M-Bus modem for PC) and the Modem Master 20 guarantee data security according to standard IEC 870-5-1/2.

Advantages of the M-Bus system

- ✓ Cost-saving field bus system
- ✓ Two-wire bus supplying power to the bus users
- ✓ Large range (several kilometres)
- ✓ European standard (EN 1434)
- ✓ Good availability of system components
- ✓ Suited for applications at home and in industry
- ✓ Remote reading of consumption (water, heat, gas, electricity, ...)
- ✓ Total energy monitoring
- ✓ Data logging by mouse click

Technical data

Operating voltage:	10.8 .. 25V DC or 8 .. 18V AC	DTE-baudrate:	300 .. 2400 baud (online switchable)
Power input:	max. 7W	Data format:	free selectable, parity bit is transmitted
Temperature range:	0 .. 55 °C	Timing:	according to standard IEC870-5-1/2
M-Bus voltage:	32V (mark) 20V (space)	Housing:	black aluminium housing rail mounted protection type IP20 H x W x D: 135 x 70 x 29 mm
M-Bus quiescent current:	max. 30mA (20 unit loads)	Ports:	power socket coax. 2,5mm M-Bus plug- screw terminal telephone connector RJ12C
Overcurrent threshold:	60mA	Approval:	CE
Internal Bus resistance:	approx. 100 Ω		
Bus extension:	Total cable length: max. 4000m at 2400 baud 20 devices at end of bus: 500m (wire: J-Y(St)-Y nx2x0,8)		

Order information

M-Bus Modem Master 20 Art-No. MR007A

Delivery contains:

230V power supply unit with 9V AC output
telephone adapter from RJ12C to TAE-N

Accessories

M-Bus Modem for PC	Art-No. MOD002
M-Bus readout software:	
Look@M-Bus for Windows95/98/NT	Art-No. SW006
LocalService@M-Bus (time module)	Art.-No. SW006Z
M-Bus OLE Server for Windows95/98/NT	Art.-No. SW005M

Relay

Reinecke Elektronikentwicklung und Layout GmbH
Stettiner Str. 38 Tel.: 05251 / 1767-0
D-33106 Paderborn Fax.: 05251 / 1767-20
www.relay.de EMail: info@relay.de

PadMess

Meß- und Kommunikationstechnik GmbH
Stettiner Str. 38 Tel.: 05251 / 1769-0
D-33106 Paderborn Fax.: 05251 / 1769-20
www.padmess.de EMail: info@padmess.de