

# M-Bus Micro-Master

*Portable M-Bus master*

*Operates up to 10 M-Bus slaves*

*Power supply by laptop*

*Transmission speed max 9600 baud*

*Short circuit protection at the M-Bus*

*Energy-saving mode*



The M-Bus Micro-Master has specially been designed for mobile service. In combination with a laptop it is suitable for setup of individual M-Bus slaves during installation and also for fast and easy reading of small M-Bus systems by external service personnel.

Up to 10 M-Bus slaves can directly be operated by the Micro-Master. With its compact and light construction it is ideally suited for service purposes.

Two different versions of the Micro-Master are available.

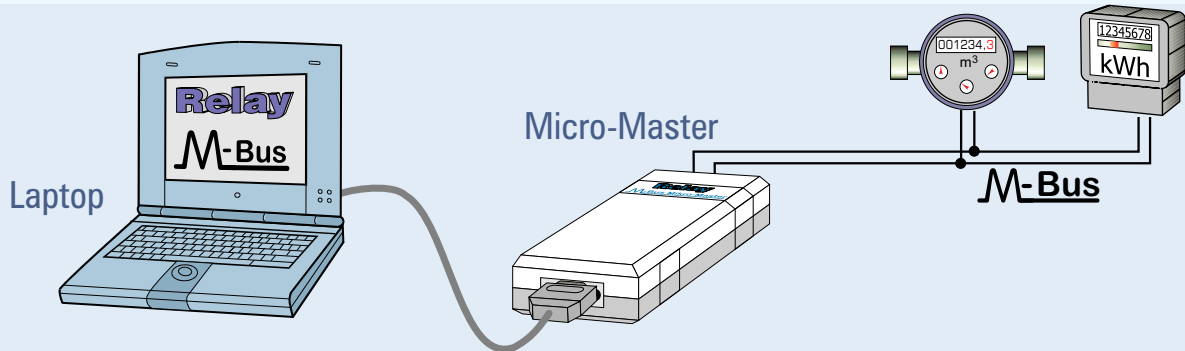
The serial model is connected to the laptop by a special RS232/PS2-keyboard cable, while the second version is a real USB device.

**Relay**

**PadMess**

**For mobile operation:**

# M-Bus Micro-Master



## Function of the Micro-Master

The Micro-Master is a small mains-independent M-Bus master with a RS232 serial or an USB port. It is supplied by the external PS2-keyboard connection or the USB port of a laptop, with a special cable contained in the scope of supply. This offers an easy setup of M-Bus slaves in the field installation.

The Micro-Master is able to operate small M-Bus networks with up to 10 slaves and offers a built-in energy-saving mode controlled by software.

## Advantages of the M-Bus system

- ✓ Cost-saving field bus system
- ✓ Two-wire bus supplying power to the bus users
- ✓ Large range (several kilometres)
- ✓ European standard (EN 1434)
- ✓ Good availability of system components
- ✓ Suited for applications at home and in industry
- ✓ Remote reading of consumption (water, heat, gas, electricity, ...)
- ✓ Total energy monitoring
- ✓ Data logging by mouse click
- ✓ Transmission rates up to 38 400 baud

## Technical data

Operating voltage: 5V DC  $\pm$  5%  
Power input: max. 1.5W  
Temperature range: 0 .. 55 °C

M-Bus voltage: 28V (mark)  
16V (space)  
M-Bus quiescent current: max. 15mA  
(10 unit loads)

Overcurrent threshold: 60mA  
Bus resistance: approx. 100  $\Omega$   
Bus extension: max. 500m (J-Y(St)-Y nx2x0.8)  
(10 devices at bus end)

Transmission speed: 300 .. 9600 baud  
with echo suppression  
in the USB version

Housing: light-grey, plastic  
protection type IP40  
H x W x D: 30 x 54 x 110 mm

Connectors: D-SUB 9-pin socket for RS232  
or USB socket type B

M-Bus plug-in screw terminal

## Order information

M-Bus Micro-Master RS232 Art.-No. MR003  
M-Bus Micro-Master USB Art.-No. MR003USB  
Delivery contains:  
MR003: special RS232 / PS2 cable to laptop  
MR003USB: USB cable A-B and device driver for Windows

## Accessories

M-Bus readout software:  
Look@M-Bus for Windows95/98/NT Art.-No. SW006  
LocalService@M-Bus (time module) Art.-No. SW006Z  
M-Bus OLE server for Windows95/98/NT Art.-No. SW005

**Relay**

Reinecke Elektronikentwicklung und Layout GmbH  
Stettiner Str. 38 Tel.: 05251 / 1767-0  
D-33106 Paderborn Fax.: 05251 / 1767-20  
www.relay.de EMail: info@relay.de

**PadMess**

Meß- und Kommunikationstechnik GmbH  
Stettiner Str. 38 Tel.: 05251 / 1769-0  
D-33106 Paderborn Fax.: 05251 / 1769-20  
www.padmess.de EMail: info@padmess.de